

Flawless make-up from the moment you wake up

Semi-permanent make-up is a non-surgical treatment that simulates perfectly

applied make-up through the infusion of mineral pigments into the skin. It improves facial features giving a hassle-free solution to looking great.

Hina Solanki, founder of Sol Cosmetics, is renowned within the industry and regularly features in glossy magazines and on television. With a refreshing, caring attitude, Hina strives to create a natural look that not only makes her clients look better but also feel more confident in their skin.

Whether it's a beauty enhancement like an eyebrow shape or lip blush to more serious medical reconstructions or a simple scar camouflage, Hina can help you.

Our clients no longer have to be satisfied with heavily blocked brows, thick eyeliners and unsightly lip lines, as the techniques, colour knowledge and pigments have advanced massively in permanent cosmetics and can be as subtle as you wish.

Beautiful brows

Short eyebrows can be lengthened, thin or sparse eyebrows can be given more fullness and a thicker shape, asymmetrical eyebrows can be corrected and an anti-ageing lift effect can be created to improve the appearance of straight or drooping eyebrows.

Luscious lips

This procedure can be used to perfect lip shape, define the natural lip line and enhance the natural lip colour giving a healthy appearance to the lips. This procedure also has a remarkable anti-ageing effect on pale lips that have lost their colour and lip line sharpness due to the ageing process.

Bright eyes

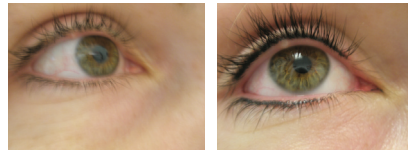
More and more people are discovering the advantages of using of permanent

eyeliner not only because it enhances their appearance but also because it suits their lifestyle. The major benefit of permanent eye make up is that it never smears or rubs off the skin even through watery eyes, perspiration, sleep and the weather.

Beyond beauty

Hina Solanki also holds regular clinics undertaking paramedical procedures. This essential work helps people who have been disfigured through accident, trauma and illness or conditions from birth. Semi-permanent make-up can help in the restoration of the nipple and areola, scar camouflage, hair replacement, eyebrow and eyelash loss due to chemotherapy, re-pigmentation of vitiligo and restoration of cleft palate.

Case Study: Ruth's story



I went in to have an eyelash enhancement done as I was tired of my sparse eyelashes and I wanted to look my best on my upcoming wedding day. We choose the colour of the pigment together and then a topical anaesthetic was applied to the skin. Hina dotted the pigment through my eyelash line to give the appearance of thicker lashes.

It felt a bit scratchy first, but after five minutes I couldn't feel a thing. The whole process took about 40 minutes. I was then given a healing balm to apply and was guided through the aftercare.

I thought the treatment was simple, quick and well worth it.



For more information, call 0845 652 0917 or visit www.solcosmetics.co.uk